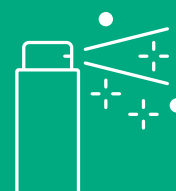
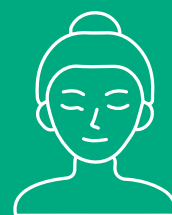


# PERSONAL CARE PRODUCT PORTFOLIO



**Skin & Hair Solutions**





SURFACTANT TYPE	PRODUCT DEFINITION				RECOMMENDED APPLICATION (2)								MAIN BENEFITS (3)								GREEN ATTRIBUTES												
	TRADE NAME	INCI - CHEMICAL DESCRIPTION	ACTIVE MATTER % (APPROX.)(1)	APPEARANCE (20°C)	SHAMPOO	CONDITIONER	BATH&SHOWER GEL	FACE CLEANSER	OILY CLEANSERS	LEAVE-ON SKIN CARE	SUN CARE	HAIR DYES	FOAM VOLUME	IMPROVED FOAM QUALITY	MILDNESS	THICKENER	APPEARANCE MODIFIER	SOLUBILIZER	EMOLLIENT / CONDITIONER	EMULSIFIER	DISPERSING	OTHERS	SULFATE-FREE	PEG-FREE	PRESERVATIVE-FREE	NOC (ISO 16128)	READILY BIODEGRADABLE	PALM-BASED	RSPO MB QUALITY AVAILABLE (4)	VEGAN	COSMOS	TSCA APPROVED (5)	CHINA APPROVED
ANIONIC	AKYPO FOAM LM 25	Potassium Laureth-4 Carboxylate	≈ 60	Paste	●		●	●				●●	●●	●									●		●	0,81	●	●	●	●		C	
	AKYPO FOAM RL 40	Sodium Laureth-5 Carboxylate	≈ 60	Paste	●		●						●●	●	●								●		●	0,74	●	●	●	●		●	●
	AKYPO RLM 100	Laureth-11 Carboxylic Acid	≈ 90	Liquid	●		●						●	●	●			●				●		●	0	●	●	●	●		●	●	
	AKYPO RLM 45 CA	Laureth-6 Carboxylic Acid	≈ 92	Liquid	●		●		●				●	●	●								●		●	0,57	●	●	●	●		●	●
	AKYPO RLM 45 N	Sodium Laureth-6 Carboxylate	≈ 82	Paste	●		●						●	●	●								●		●	0,66	●	●	●	●		●	●
	AKYPO SOFT 100 BVC	Sodium Laureth-11 Carboxylate	≈ 70	Liquid	●		●	●		●			●	●	●					●				●		0,28	●	●	●	●		●	●
	AKYPO SOFT 45 HP	Sodium Laureth-6 Carboxylate	≈ 22	Liquid	●		●						●	●	●								●		●	0,91	●	●	●	●		●	●
	AKYPO SUGAR LM-42	Sodium Lauryl Glucose Carboxylate, Lauryl Glucoside	≈ 40	Liquid	●		●	●		●	●		●	●	●●					●				●	●	0,96	●	●●	●	●	●	●	●
	ALFANOX 46	Sodium C14-16 Olefin Sulfate	≈ 38	Liquid	●		●						●										●	●		0,61	●			●		●	●
	ALFANOX 46/BA	Sodium C14-16 Olefin Sulfate	≈ 38	Liquid	●		●						●										●	●		0,61	●			●		●	●
	DANOX LS-38	Lauryl Hydroxysultaine, Disodium Lauryl Sulfosuccinate	≈ 43 (DM)	Viscous Liquid	●		●	●					●●	●	●●								●	●		0,84	●	●	●●	●		●	●
	DANOX SLL	Lauryl Hydroxysultaine, Cocamidopropyl Hydroxysultaine, Sodium Lauroyl Lactylate	≈ 40 (DM)	Viscous Liquid	●		●	●					●	●●	●●								●	●	●	0,89	●	●	●●	●		●	●
	EMAL 10G	Sodium Lauryl Sulfate	> 95	Granules	●		●						●											●	●	1	●	●	●	●	●	●	●
	EMAL 10G -12	Sodium Lauryl Sulfate	> 95	Granules	●		●						●											●	●	1	●	●	●	●	●	●	●
	EMAL 10G-3	Sodium Lauryl Sulfate	> 95	Granules	●		●						●											●	●	1	●	●	●	●	●	●	●
	EMAL 10N	Sodium Lauryl Sulfate	> 95	Needles	●		●						●											●	●	1	●	●	●	●	●	●	●
	EMAL 10P HD	Sodium Lauryl Sulfate	> 95	Powder	●		●						●											●	●	1	●	●	●	●	●	●	●
	EMAL 227E	Sodium Laureth Sulfate	≈ 27	Liquid	●		●						●													0,93	●	●	●	●		●	●
	EMAL 228DJM	Sodium Laureth Sulfate	≈ 28	Liquid	●		●						●													0,93	●	●	●	●		●	●
	EMAL 228HP	Sodium Laureth Sulfate	≈ 28	Liquid	●		●						●											●		0,93	●	●	●	●		●	●
	EMAL 270D or 270E	Sodium Laureth Sulfate	≈ 70	Paste	●		●						●											●		0,82	●	●	●	●		●	●
	EMAL 30 E	Sodium Lauryl Sulfate	≈ 30	Liquid	●		●						●											●		1	●	●	●	●		●	●
	EMAL 40TE	TEA Lauryl Sulfate	≈ 40	Liquid	●		●						●											●	●	0,87	●	●	●	●		●	●
	ICTEOL K-50-E	Potassium Oleate	≈ 48	Fluid Paste			●						●	●	●								●	●	●	1	●	●	●	●		●	●
SUCCIDET S 30 UK	Disodium Laureth Sulfosuccinate	≈ 33	Liquid	●		●						●		●									●		0,83	●	●	●	●		●	●	
SUCCIDET S 30BA	Disodium Laureth Sulfosuccinate	≈ 33	Liquid	●		●						●		●									●		0,86	●	●	●	●		C	●	

(1) DM: Dry Matter % (2) Could be used for other applications (3) Main Benefits Classification ● Good ●● Excellent (4) RSPO-MB: ● RSPO -MB Available ●● Only RSPO - MB Available (5) C: Only for Cosmetic use



SURFACTANT TYPE	PRODUCT DEFINITION				RECOMMENDED APPLICATION (2)									MAIN BENEFITS (3)									GREEN ATTRIBUTES											
	TRADE NAME	INCI - CHEMICAL DESCRIPTION	ACTIVE MATTER % (APPROX.) (1)	APPEARANCE (20°C)	SHAMPOO	CONDITIONNER	BATH&SHOWER GEL	FACE CLEANSER	OILY CLEANSERS	LEAVE-ON SKIN CARE	SUN CARE	HAIR DYES	FOAM VOLUME	IMPROVED FOAM QUALITY	MILDNESS	THICKENER	APPEARANCE MODIFIER	SOLUBILIZER	EMOLLIENT / CONDITIONER	EMULSIFIER	DISPERSING	OTHERS	SULFATE-FREE	PEG-FREE	PRESERVATIVE-FREE	NOC (ISO 16128)	READILY BIODEGRADABLE	PALM-BASED	RSPO MB QUALITY AVAILABLE (4)	VEGAN	COSMOS	TSCA APPROVED (5)	CHINA APPROVED	
AMPHOTERIC	BETADET HR	Cocamidopropyl Betaine	≈ 30	Liquid	●		●	●				●	●	●									●	●		0,81	●	●	●	●	●	●	●	
	BETADET HR-50K	Cocamidopropyl Betaine	≈ 40	Liquid	●		●	●				●	●	●									●	●		0,83	●	●	●	●		●	●	
	BETADET S-20	Lauryl Hydroxysultaine	≈ 38	Liquid	●		●	●				●	●	●●									●	●		0,78	●	●	●	●		●	●	
	BETADET SHR	Cocamidopropyl Hydroxysultaine	≈ 44	Liquid	●		●	●				●	●	●●									●	●		0,83	●	●	●	●		●	●	
	BETADET THC-2	Disodium Cocoamphodiacetate	≈ 38	Viscous Liquid	●		●	●				●	●	●●									●	●		0,86	●	●	●●	●	●	●	●	
NON-IONIC	AKYPO ROX CO 400	PEG-40 Hydrogenated Castor Oil	≈ 100	Soft Paste	●		●	●	●								●					●			0	●			●		●	●		
	AMIDET A/17	PEG-5 Cocamide	≈ 100	Liquid							●									●			●			0,73	●	●	●	●		●	●	
	AMIDET A-111-P	Cocamide MEA	≈ 100	Pellets	●		●					●	●		●								●	●		0,88	●	●	●	●		●	●	
	AMIDET A15	Trideceth-2 Carboxamide MEA	≈ 95	Liquid	●		●					●	●	●	●								●			0	●			●		●	●	
	AMIDET B-112	Cocamide DEA	≈ 100	Liquid	●		●					●	●		●								●	●		0,79	●	●	●	●		●	●	
	AMIDET N	PEG-4 Rapeseedamide	≈ 95	Liquid	●		●					●	●	●	●			●					●			0,8	●			●		●	●	
	COCONAD RK	Tricaprylin	≈ 100	Liquid				●	●	●	●								●		●		●	●		1	●	●	●●	●	●	●	●	
	EMANON EV-E	Glycereth-7 Caprylate/Caprato	≈ 100	Liquid	●		●	●	●	●			●	●	●●			●		●			●			0	●	●	●	●		●	●	
	EMANON EV-E BIO	Glycereth-7 Caprylate/Caprato	≈ 100	Liquid	●		●	●	●	●			●	●	●●			●		●			●			1	●	●	●●	●		●	●	
	EMANON HE	PEG-7 Glyceryl Cocoate	≈ 100	Liquid	●		●						●	●						●			●			0,52	●			●		●	●	
	EXCEPARL LM-LC	Lauryl Lactate	≈ 100	Liquid	●		●	●	●	●	●				●●	●●			●		●			●	●		1	●	●	●	●		●	●
	FINET 1214N/23	Laureth-11 & Myreth-11	≈ 100	Solid Paste						●	●										●		●			0	●	●	●	●		●	●	
	FINET 1618A/18	Ceteareth-6	≈ 100	Waxy Solid						●	●												●			0	●	●	●	●		●	●	
	FINET 1618A/35-P	Ceteareth-23	≈ 100	Pellets						●	●	●											●			0	●	●	●	●		●	●	
	FINET 1618A/72-P	Ceteareth-60	≈ 100	Pellets						●	●	●											●			0		●	●	●		●	●	
	FINET 1816/32-E	Oleth-20 & Ceteth-20	≈ 100	Solid						●	●	●											●			0	●	●	●	●		●	●	
	FINET ARH/52	PEG-40 Hydrogenated Castor Oil	≈ 100	Soft Paste	●		●	●	●									●					●			0	●			●		●	●	
	KALCOL 6098	Cetyl Alcohol	≈ 100	Solid		●				●	●	●				●							●	●		1	●	●	●	●		●	●	
	KALCOL 6850	Cetearyl Alcohol	≈ 100	Solid		●				●	●	●				●							●	●		1	●	●	●	●		●	●	
	KALCOL 6870P	Cetearyl Alcohol	≈ 100	Solid		●				●	●	●				●							●	●		1	●	●	●	●		●	●	
KALCOL 8098	Stearyl Alcohol	≈ 100	Solid		●				●	●	●				●							●	●		1	●	●	●	●		●	●		
KAO SOFCARE GP-1	PPG-3 Caprylyl Ether	≈ 100	Liquid	●	●		●		●	●		●	●	●	●			●				●			0	●	●	●	●		●	●		
KAOPAN SP-010	Sorbitan Oleate	≈ 100	Liquid						●	●				●								●	●		1	●	●	●	●		●	●		

(1) DM: Dry Matter % (2) Could be used for other applications (3) Main Benefits Classification ● Good ●● Excellent  
 (4) RSPO-MB: ● RSPO -MB Available ●● Only RSPO - MB Available (5) C: Only for Cosmetic use



SURFACTANT TYPE	PRODUCT DEFINITION				RECOMMENDED APPLICATION (2)									MAIN BENEFITS (3)										GREEN ATTRIBUTES										
	TRADE NAME	INCI - CHEMICAL DESCRIPTION	ACTIVE MATTER % (APPROX.)(1)	APPEARANCE (20°C)	SHAMPOO	CONDITIONER	BATH&SHOWER GEL	FACE CLEANSER	OILY CLEANSERS	LEAVE-ON SKIN CARE	SUN CARE	HAIR DYES	FOAM VOLUME	IMPROVED FOAM QUALITY	MILDNESS	THICKENER	APPEARANCE MODIFIER	SOLUBILIZER	EMOLLIENT / CONDITIONER	EMULSIFIER	DISPERSING	OTHERS	SULFATE-FREE	PEG-FREE	PRESERVATIVE-FREE	NOC (ISO 16128)	READILY BIODEGRADABLE	PALM-BASED	RSPO MB QUALITY AVAILABLE (4)	VEGAN	COSMOS	TSCA APPROVED (5)	CHINA APPROVED	
NON-IONIC	KAOPAN TW L120	Polysorbate 20	≈ 100	Liquid	●		●			●	●			●						●			●		●	0	●	●	●	●		●	●	
	KAOPAN TW S120	Polysorbate 60	≈ 100	Liquid						●	●				●								●		●	0	●	●	●	●		●	●	
	KAOPAN TW-IS399S	PEG-160 Sorbitan Triisostearate	≈ 75	Viscous Liquid	●		●								●	●●							●		●	0				●		●	●	
	LEVENOL C-201B	Glycereth-17 Cocoate	≈ 100	Liquid	●		●	●		●	●				●●								●		●	0	●	●	●	●		●	●	
	LEVENOL C-301B	Glycereth-7 Cocoate	≈ 100	Liquid	●		●			●	●				●●								●		●	0	●	●	●	●		●	●	
	LEVENOL H&B	Glycereth-2 Cocoate	≈ 100	Liquid	●		●	●		●	●		●	●	●●	●				●	●			●		●	0,75	●	●	●	●		●	●
	OXIDET DM-20	Lauramine Oxide	≈ 30	Liquid	●		●						●		●									●	●	0,96	●	●	●	●		●	●	
	OXIDET DMCLD	Cocamine Oxide	≈ 30	Liquid	●		●						●		●									●	●	0,96	●	●	●	●		●	●	
	OXIDET L-75 C	Cocamidopropylamine Oxide	≈ 33	Liquid	●		●						●		●									●	●	0,91	●	●	●	●		●	●	
	PENETOL GE-IS	Isostearyl Glyceryl Ether	≈ 100	Liquid						●	●										●			●	●	0,86		●	●	●		C	●	
	RHEODOL 430V	Sorbeth-30 Tetraoleate	≈ 100	Liquid				●	●									●					●		●	0,59		●	●●			●	●	
	RHEODOL A0-15V	Sorbitan Sesquioleate	≈ 100	Liquid						●	●												●		●	1	●	●	●●			●	●	
	RHEODOL M0-60	Glyceryl Oleate	≈ 100	Liquid	●		●	●		●	●												●	●	●	0,9	●	●	●●	●		●	●	
CATIONICS	AMIDET APA 18	Stearamidopropyl Dimethylamine	≈ 100	Pellets		●					●											●	●	●	0,78	●			●		●	●		
	AMIDET APA-22	Behenamidopropyl Dimethylamine	≈ 100	Pellets		●					●												●	●	●	0,82	●			●		●	●	
	DANOX HC-30	Behenamidopropyl Dimethylamine, Dipalmitoylethyl Hydroxyethylmonium Methosulfate, Cetyl Alcohol, Stearyl Alcohol, Lactic Acid	≈ 100	Pellets		●				●													●	●	●	0,94	●	●	●	●		●	●	
	QUARTAMIN 60L	Cetrimonium Chloride	≈ 50	Liquid		●																	●	●	●	0,58	●	●	●	●		●	●	
	QUARTAMIN 60W25	Cetrimonium Chloride	≈ 25	Liquid		●																	●	●	●	0,96	●	●	●	●		●	●	
	QUARTAMIN 60W30	Cetrimonium Chloride	≈ 25	Liquid		●																	●	●	●	0,95	●	●	●	●		●	●	
	QUARTAMIN AB	Behentrimonium Chloride	≈ 85	Pellets		●																	●	●	●	0,72	●			●		●	●	
	QUARTAMIN AB-DP	Behentrimonium Chloride	≈ 75	Pellets		●																	●	●	●	0,61	●			●		●	●	
	TETRANYL L6-30	Dipalmitoylethyl Hydroxyethylmonium Methosulfate, Cetearyl Alcohol	≈ 100	Pellets		●																	●	●	●	0,94	●	●	●●	●		●	●	
	TETRANYL C0-40	Dioleylethyl Hydroxyethylmonium Methosulfate	≈ 80	Liquid		●																	●	●	●	0,64	●	●	●	●		C	●	
TETRANYL U	Undecylenamidopropyltrimonium Methosulfate	≈ 47	Liquid	●		●															●	●	●	●	0,77	●			●		C	●		
PEARLING AGENTS	AKYPO SAL 2010S	Sodium Laureth Sulfate, Cocamide DEA, Glycol Distearate	≈ 38 (DM)	Paste	●		●									●									0,94	●	●	●	●		●	●		
	DANOX PEARL GS	Glyceryl Stearate, Cocamidopropyl Betaine, Sodium Lauryl Glucose Carboxylate, Lauryl Glucoside	≈ 28 (DM)	Paste	●		●								●●		●						●	●		0,95	●	●	●●	●	●	●	●	
	DANOX BF-22	Cocamidopropyl Betaine, Laureth-4, Glycol Distearate	≈ 44 (DM)	Paste	●		●								●●		●						●			0,89	●	●	●	●		●	●	
	DANOX P-15	Sodium Laureth Sulfate, Cocamide MEA, Glycol Distearate	≈ 44 (DM)	Paste	●		●										●							●		0,95	●	●	●	●		●	●	
	DANOX PL-10	Sodium Laureth Sulfate, Glycereth-2 Cocoate, Glycol Distearate	≈ 44 (DM)	Paste	●		●										●							●		0,9	●	●	●	●		●	●	

(1) DM: Dry Matter % (2) Could be used for other applications (3) Main Benefits Classification ● Good ●● Excellent (4) RSPO-MB: ● RSPO - MB Available ●● Only RSPO - MB Available (5) C: Only for Cosmetic use

